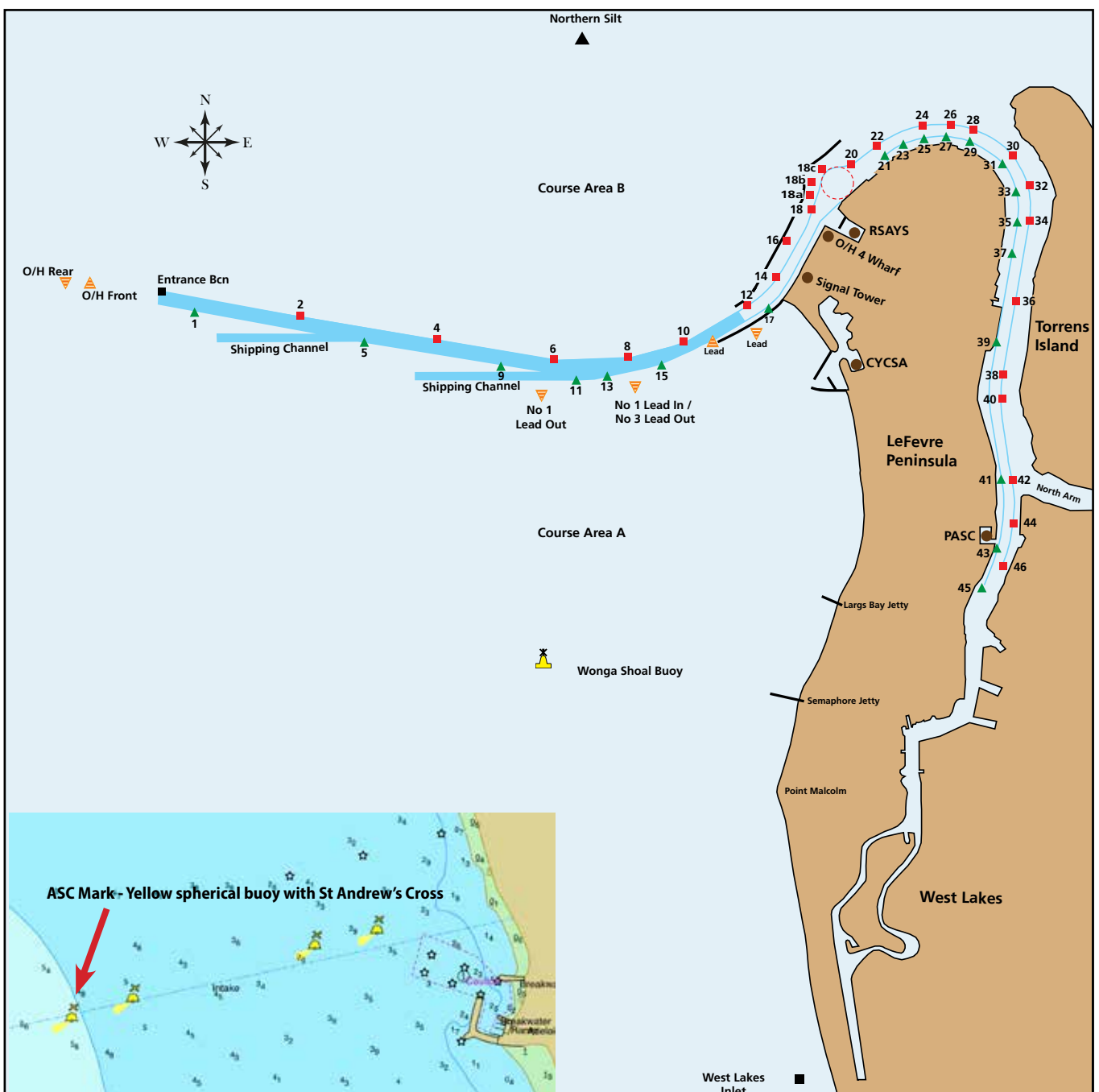




# RSAYS and CYCSA Fixed Mark Courses Season 2023 -2024



**Version 1 - September 2023**



Please Note: Some courses may extend further south than the limits of this map

## General Information

1. The following course descriptions lists the order in which marks are to be passed and the side each mark is to be rounded.
2. The course to be sailed will be signalled by a numeral board displayed from the committee vessel. The course to be sailed may also be broadcast on VHF Ch77.
3. For all courses a 'Laid Mark' may be set as part of the course. The 'Laid Mark' will be set upwind from the start line. The course axis and distance of the 'Laid Mark' will be signalled from the Committee Boat and may also be broadcast on VHF Ch77. The direction for rounding the 'Laid Mark' will be indicated by a red flag for port rounding or green flag for starboard rounding hoisted at or before the warning signal. If no signal is made the 'Laid Mark' is deleted from the course.
4. For some courses a 'Set Mark' may be laid as part of the course. The positions of these marks are shown in the course marks/beacons, or signalled from the Committee Boat or broadcast on VHF Ch77.
5. Where a Leeward mark is part of a course description it will be laid approx. 50/75 metres upwind from the start line.
6. Courses may be shortened at (a) any mark of the course or (b) between the committee boat and a pink inflatable mark at any point on the course which all boats can be expected to pass. When a finish mark has been laid boats shall finish in the direction from the last rounding/passing mark.
7. Be aware of our obligation to keep clear of shipping at all times.
8. Unless otherwise noted all Start/ Finish lines will be in Area "A"
9. When conditions dictate, the finish will be set in the river. The finish line will be between a mast displaying an blue flag on the committee boat and the southern edge of the vertical blue panel on the Outer Harbor Signal Tower.
 

The decision to position the river finish will be indicated by flying Code Flag "R" before the start and all boats notified by radio. If the decision is made after the start all boats will be notified by radio.
10. Warning Times, Radio Procedures and Class Flags are detailed in the standard Sailing Instructions.
11. When a race is designated as "Allboats" (ie not run in divisions) the course will be the Div 1 course shown in the course descriptions.
12. All courses that are heading to the finish after Northern Silt are to finish north of the channel.

## Course Marks/Beacons (approximate GPS positions)

Start / Finish Line	Pink Inflatable	
Laid mark	Orange Inflatable	
Set Mark	Orange Inflatable	
O/H Rear Lead	34° 46.695'S	138° 21.458'E
O/H Front Lead	34° 46.731'S	138° 21.683'E
Entrance Beacon	34° 46.815'S	138° 22.529'E
Beacon #1 Green	34° 46.994'S	138° 22.934'E
Beacon #2 Red	34° 47.038'S	138° 23.880'E
Beacon #4 Red	34° 47.261'S	138° 25.233'E
Beacon #5 Green	34° 47.254'S	138° 24.513'E
Beacon #6 Red	34° 47.450'S	138° 26.376'E
Beacon #8 Red	34° 47.444'S	138° 27.110'E
Beacon #9 Green	34° 47.450'S	138° 25.707'E
Beacon #10 Red	34° 47.329'S	138° 27.672'E
Beacon #11 Green	34° 47.598'S	138° 26.568'E
Beacon #13 Green	34° 47.592'S	138° 26.923'E
#1 Lead Out	34° 47.654'S	138° 26.255'E
#1 Lead In/#3 Lead Out	34° 47.633'S	138° 27.176'E
Northern Silt	34° 44.850'S	138° 26.669'E
Wonga Shoal Buoy	34° 49.966'S	138° 26.082'E
Point Malcolm Set Mark	34° 51.270'S	138° 27.050'E
Squadron Set Mark	34° 48.784'S	138° 27.168'E
Grange Set Mark	34° 54.160'S	138° 28.546'E
ASC Mark	34° 57.468'S	138° 29.362'E

# Course Descriptions

## Course No 1

**Div 1 or Allboats:** Start; Laid Mark (if signalled); No 10 Red Beacon (S); Northern Silt (P); No 5 Green Beacon (P); Wonga Shoal Buoy (P); Finish. (12 nm approx)

**Div 2:** Start; Laid Mark (if signalled); No 10 Red Beacon (S); Northern Silt (P); No 1 Lead Out (P); Wonga Shoal Buoy (P); Finish. (11 nm approx)

## Course No 2

**Allboats:** Start; Laid mark (if signalled); Wonga Shoal Buoy (S); No 1 Green Beacon (S); No 1 Lead out (P); No 1 Lead in/No 3 Lead out (S); Laid mark (if signalled at start) (P); Finish. (11.5 nm approx)

## Course No 3

**Div 1 or Allboats:** Start, Laid Mark (if signalled), Squadron Mark(S), No 1 Lead Out(S), Squadron Mark(S), No 1 Lead Out(S), Wonga Shoal(S), No 1 Lead Out(S), Finish (12nm approx)

**Div 2:** Start, Laid Mark (if signalled), Squadron Mark(S), No 1 Lead Out(S), Squadron Mark(S), No 1 Lead Out(S), Squadron Mark(S), No 1 Lead Out(S), Finish. (10 nm approx)

## Course No 4

**Allboats:** Start, Laid Mark (if signalled), No 4 Red Beacon(S), Northern Silt(S), No 4 Red Beacon(S), Northern Silt(S), Finish. (13 nm approx)

## Course No 5

**Div 1 or Allboats:** Start; Laid mark (if signalled); No 10 Red Beacon (S); Northern Silt (P); No 2 Red Beacon (P); Wonga Shoal Buoy (P); No1 Lead Out (S); No1 Lead in/No3 Lead Out (P); Finish. (14 nm approx)

**Div 2:** Start; Laid mark (if signalled); No 10 Red Beacon (S); Northern Silt (P); No 4 Red Beacon (P); Wonga Shoal Buoy (P); No1 Lead Out (S); No1 Lead in/No3 Lead Out (P); Finish. (13 nm approx)

## Course No 6

**Div 1 or Allboats:** Start; Laid mark (if signalled); Wonga Shoal Buoy (S); No 1Lead In/No 3 Lead out (S); Wonga Shoal Buoy (S); No 2 Red Beacon (S); No 10 Red Beacon (S); Finish. (15 nm approx)

**Div 2:** Start; Laid mark (if signalled); Wonga Shoal Buoy (S); No 1Lead In/No 3 Lead out (S); Wonga Shoal Buoy (S); No 4 Red Beacon (S); No 10 Red Beacon (S); Finish. (13.5 nm approx)

## Course No 7

**Div 1 or Allboats:** Start; Laid Mark (if signalled); No 10 Red Beacon (S); Northern Silt (P); No 1 Green Beacon (P); Wonga Shoal Buoy (P) ; No1 Lead Out (S); Finish (15 nm approx)

**Div 2:** Start; Laid Mark (if signalled); No 10 Red Beacon (S); Northern Silt (P); No 5 Green Beacon (P); Wonga Shoal Buoy (P) ; No1 Lead Out (S); Finish (13.5 nm approx)

## Course No 8

**Div 1 or Allboats:** Start; Laid mark (if signalled); Wonga Shoal Buoy (S); No1 Green Beacon (S); Northern Silt (S); No 10 Red Beacon (P); Laid mark (if signalled at start) (P); Finish. (14 nm approx)

**Div 2:** Start; Laid mark (if signalled); Wonga Shoal Buoy (S); No 2 Red Beacon (S); Northern Silt (S); No 10 Red Beacon (P); Laid mark (if signalled at start) (P); Finish. (13 nm approx)

## Course No 9

**Div 1 or Allboats:** Start; Laid mark (if signalled); No 1 Lead in/No 3 Lead out (P); Point Malcolm Set Mark (S); No 1 Green Beacon (S); No 1 Lead out (P); Finish. (14.5 nm approx)

**Div 2:** Start; Laid mark (if signalled); No 1 Lead in/No 3 Lead out (P); Point Malcolm Set Mark (S); No 2 Red Beacon (S); No 1 Lead out (P); Finish. (12.5 nm approx)

## Course No 10

**Allboats:** Start; Laid Mark (If signalled); Wonga Shoal Buoy (S); No 1 Lead Out (S); Wonga Shoal Buoy (S); Northern Silt (S) Finish. (15nm approx)

## Course No 11

**Div 1 or Allboats:** Start; Laid mark (if signalled); Wonga Shoal Buoy (S); No 5 Green Beacon (S); Northern Silt (S); Finish. (11.5 nm approx)

**Div 2:** Start; Laid mark (if signalled); Wonga Shoal Buoy (S); passing NO 1 Lead out (S); Northern Silt (S); Finish. (10.7 nm approx)

## Course No 12

**Div 1 or Allboats:** Start; Laid mark (if signalled); No 1 Lead in/No 3 Lead out (P); Wonga Shoal Buoy (S); No1 Green Beacon (S); Northern Silt (S); No 1 Lead out (P); No 1 Lead In/No 3 Lead out (S); Finish. (16 nm approx)

**Div 2:** Start; Laid mark (if signalled); No 1 Lead in/No 3 Lead out (P); Wonga Shoal Buoy (S); No 2 Red Beacon (S); Northern Silt (S); No 1 Lead out (P); No 1 Lead In/No 3 Lead out (S); Finish. (14.5 nm approx)

## Course No 13

**Div 1 or Allboats:** Start; Laid mark (if signalled); No 1 Lead out (P); Wonga Shoal Buoy (S); No 1 Green Beacon (S); Northern Silt (S); No 10 Red Beacon (P); Laid mark (if signalled at start - P); Finish. (15nm approx)

**Div 2:** Start; Laid mark (if signalled); No 1 Lead in/No 3 Lead out (P); Wonga Shoal Buoy (S); No 2 Red Beacon (S); Northern Silt (S); No 10 Red Beacon (P); Laid mark (if signalled at start - P); Finish. (13.5 nm approx)

## Course No 14

**Allboats:** Start; Laid mark (if signalled); Wonga Shoal Buoy (P); Grange Set Mark (S); Wonga Shoal Buoy (S); No 1 Lead Out (S); Finish (16nm approx)

## Course No 15

**Div 1 or Allboats:** Start; Laid mark (if signalled); Wonga Shoal Buoy (S); No 5 Green Beacon (S); Northern Silt (S); Wonga Shoal Buoy (P); Finish (17 nm approx)

**Div 2:** Start; Laid mark (if signalled); Wonga Shoal Buoy (S); No 9 Green Beacon (S); Northern Silt (S); Wonga Shoal Buoy (P); Finish (16.5 nm approx)

## Course No 16

**Allboats:** Start; Laid mark (if signalled); No 10 Red Beacon (S); Northern Silt (P); Wonga Shoal Buoy (P); No 1 Lead Out (P); Wonga Shoal Buoy (P); Finish (16 nm approx)

## Course No 17

**Div 1 or Allboats:** Start; Laid mark (if signalled); No 1 Lead out (S); No 1 Green Beacon (S); Northern Silt (S); Wonga Shoal Buoy (P); Finish (16.5 nm approx)

**Div 2:** Start; Laid mark (if signalled); No 1 Lead out (S); No 2 Red Beacon (S); Northern Silt (S); Wonga Shoal Buoy (P); Finish (15 nm approx)

## Course No 18

**Div 1 or Allboats:** Start; Laid mark (if signalled); Wonga Shoal Buoy (P); Start Pin Mark (P); No 2 Red Beacon (S); Northern Silt (S); No 1 Lead in/No 3 Lead Out (P); Finish (17 nm approx)

**Div 2:** Start; Laid mark (if signalled); Wonga Shoal Buoy (P); Start Pin Mark (P); No 4 Red Beacon (S); Northern Silt (S); No 1 Lead in/No 3 Lead Out (P); Finish (15 nm approx)

## Course No 19

**Allboats:** Start; Laid mark (if signalled); Wonga Shoal Buoy (S); Start Pin Mark (S); Wonga Shoal Buoy (S); Northern Silt (S); No 10 Red Beacon (P); Finish (17.5 nm approx)

## Course No 20

**Div 1 or Allboats:** Start; Laid mark (if signalled); Squadron Mark (S); No 1 Green Beacon (S); Squadron Mark (S) No 1 Green Beacon (S); Finish (Leave all beacons and leads (P) -18 nm approx)

**Div 2:** Start; Laid mark (if signalled); Squadron Mark (S); No 5 Green Beacon (S); Squadron Mark (S) No 5 Green Beacon (S); Finish (Leave all beacons and leads (P) -13 nm approx)

## Course No 21

**Allboats:** Start; Laid mark (if signalled); Wonga Shoal Buoy (P); Grange Set Mark (S); No 1 Green Beacon (S); No 1 Lead Out (P); Finish (20 nm approx)

## Course No 22

**Allboats:** Start; Laid mark (if signalled); Wonga Shoal Buoy (P); Grange Set Mark (S); Wonga Shoal Buoy (S); No 1 Lead In/No 3 Lead out (S); Wonga Shoal Buoy(P); Finish (20 nm approx)

## Course No 23

**Allboats:** Start; Wonga Shoal Buoy (P); ASC Rounding Mark (S); Wonga Shoal Buoy (S); Finish (22 nm approx)