



The Royal South Australian Yacht Squadron (OA)
in conjunction with the
Multihull Yacht Association of South Australia

Dockside

PORT VINCENT

SAILING INSTRUCTIONS



KING OF THE GULF

Friday 9 February to Tuesday 13 February 2024

“King of the Gulf”

Sailing Instructions

9 February to 13 February 2024

Organized by the Royal South Australian Yacht Squadron

Port Vincent marina berth bookings can be
made by phoning Rob Marner on
0414 611 110

<http://www.cycsa.com.au/portvincentmarina.html>

Table of Contents

1. Rules.....	3
2. Changes to Sailing Instructions [NP]:	3
3. Notices to competitors.....	3
4. Signals made ashore.....	3
5. Marks	3
6. Divisions and Classes:.....	4
7. Division and Class Flags.....	4
8. Race Programme	4
9. Courses	5
10. Start Procedures:	5
11. Start Lines.....	6
12. Finish Lines:	6
13. Time Limit [DP]:.....	6
14. Radio Communications [DP] :	6
15. Scoring :.....	6
16. Handicapping [NP]:.....	7
17. Safety [DP] [NP]:	7
18. Arbitration/ Protests:.....	7
19. Rendering Assistance:	8
20. Prizes:.....	8
21. Disclaimer of liability and risk warning:.....	8
Addendum A - Personal Safety Protocol	8
Addendum B - Short Handed Safety Protocol.....	9
Addendum C - Mark Locations and Course Maps	10

The Organising Authorities are the Royal South Australian Yacht Squadron and the Multihull Yachting Association of South Australia.

[NP] denotes that a breach of this rule will not be grounds for protest by boat. This changes RRS 64.1(a)

[DP] denotes a rule for which the penalty is at the discretion of the protest committee. This changes RRS 64.1

1. Rules

All races will be governed by the rules as defined by the Racing Rules of Sailing RRS 2021-2024, Prescriptions and safety regulations of Australian Sailing (AS) shall apply, the South Australian Recreational Boating Regulations (DTEI) and the International Regulations for Prevention of Collisions at Sea. 1972 (COLREGS) shall apply.

- 1.1 Nothing in these Sailing Instructions or Notice of Race relieves a boat of her responsibility under civil law to comply with the International Regulations for Preventing Collisions at sea or local conditions.
- 1.2 Between sunset and sunrise, when a boat cannot determine with certainty what tack the other boat is on, she shall keep clear of that boat. Competitors are reminded that part of the definition of "room" in the RRS includes taking into account the existing conditions (including visibility).
- 1.3 A boat, while racing, shall not cause interference to commercial shipping or other vessels having right of way under the government right of way regulations.
- 1.4 The following alterations have been made to the rules:
 - 1.4.1 RRS 51, Movable or Variable ballast (within the meaning of those terms in the Special regulations) is altered by adding 'except that canting keels and transferable water ballasting and pumps to fill, transfer and exhaust water ballast are allowed for the purpose of changing trim or stability'.
 - 1.4.2 RRS 52 (Manual Power) shall not apply. Stored power is permitted for the adjustment and operation of self steering, sails and movable appendages.
- 1.5 Boats with extendible bowsprits shall have them retracted when not in use on a windward leg of the course, except when approaching the windward mark. After rounding a leeward mark, it shall be retracted as soon as practicable.
- 1.6 Supplementary Sailing Instructions may be issued for any race and shall be read in conjunction with these Sailing Instructions (SIs) and take precedence where there is a conflict. Any and all amendments shall apply to those/that race(s) unless expressly stated as permanent changes. The Supplementary Sailing Instructions will be available from the Racing Office at least two hours prior to the scheduled warning signal.
- 1.7 Rule 44 is changed for multihulls – Rules 44.1 & 44.2 are amended from a two-turns Penalty to read one-turn Penalty.
- 1.8 The RSAYS Short-handed Safety Protocol applies. See Addendum A

2. Changes to Sailing Instructions [NP]:

- 2.1 Any change to the Sailing Instructions will be posted on the Official Notice Board not less than 2 hours prior to the warning signal or from the committee Boat at Port Vincent for the first race in which the change will take effect. This will be indicated by the code flag L flown from the club mast and a single sound signal.
- 2.2 Verbal changes to the Sailing Instructions may be made from the Committee Boat by displaying the 'Third Substitute' with two sound signals followed by no less than three broadcasts over VHF 77. Failure by the competitor to hear the transmissions will not be grounds for redress. This changes RRS 62.1(a).

3. Notices to competitors

Notices to competitors will be placed on the Official Notice Board located inside the Regatta Marquee.

4. Signals made ashore

- 4.1. Signals made ashore will be displayed from the Committee Boat.
- 4.2. Postponement Signals - When flag AP is displayed ashore '1 minute' is replaced with 'not less than 60 minutes'. This changes RRS Signals.

5. Marks

- 5.1 **Starting and finishing:** Marks will be a black and white chequered buoy or a pink buoy.
- 5.2 **Laid mark races for all divisions (Cat 6):** Course marks will be large inflatable buoys, W1 will be orange, and W2 will be yellow. L1 will be orange. T will be orange. Change mark will be yellow with a black horizontal band.
- 5.3 **New Marks:** For Cat 6 races to change the next leg of the course, the race committee will lay a new mark (or move the finishing line) and remove the original mark as soon as practicable. When in a subsequent change a new mark is replaced, it will be replaced by an original mark

6. Divisions and Classes:

6.1. The Racing Committee shall allocate boats to a division or class for a series or race.

6.2. Divisions:

Category 5 Destination / Offshore Races

Multihull EHC and OMR (for the Passage Races)

Monohull (Division 1) EHC

Monohull (Division 2) EHC

Cruising Division EHC

Category 6 Inshore "King of the Gulf" regatta races

Multihull EHC and OMR (for the Multihull State Championship)

Monohull (Division 1) EHC

Monohull (Division 2) EHC and CBH (for the Trailer Sailer State Championships).
In the event that the Australian Sailing CBH Rating lists by a CLASS - "Insufficient Data - Requires more sail measurements" the handicap assigned to a class will be at the discretion of the race committee.

Cruising Division EHC

Note: No spinnakers or other types of flying sail are allowed in Cruising Divisions for both Monohulls and Multihulls. That is all sails flown in front of the mast must be attached to a fixed stay over the majority of the luff length.

7. Division and Class Flags

Multihull and SA Multihull Championships Division - Numeral pennant 1

Monohull Division 1 - Numeral pennant 2

Monohull Division 2 -and SA Trailer Sailer States Numeral pennant 3

Cruising Division - Numeral pennant 4



8. Race Programme

Date	Class	Event	First Warning
Fri 9 Feb	Multihull Racing	Adelaide to Pt Vincent Passage Race	10:10
	Monohull Racing	Adelaide to Pt Vincent Passage Race	10:15
	Cruising	Adelaide to Pt Vincent Passage Race	10:20
Sat 10 Feb	Multihull Racing	2 x laid mark races at Pt Vincent	10:25
	Monohull Racing (Div 1)	2 x laid mark races at Pt Vincent	10:30
	Monohull Racing (Div 2)	2 x laid mark races at Pt Vincent	10:35
	Cruising	2 x laid mark races at Pt Vincent	10:40
Sun 11 Feb	Multihull Racing	1 x Coastal Race	10:35
	Monohull Racing (Div 1)	1 x Coastal Race	10:25
	Monohull Racing (Div 2)	1 x Coastal Race	09:25
	Cruising	1 x Coastal Race	09:55
Mon 12 Feb	Multihull Racing	2 x laid mark races at Pt Vincent	10:25
	Monohull Racing (Div 1)	2 x laid mark races at Pt Vincent	10:30
	Monohull Racing (Div 2)	2 x laid mark races at Pt Vincent	10:35
	Cruising	2 x laid mark races at Pt Vincent	10:40
Tue 7 Feb	Cruising	Pt Vincent to Adelaide Passage Race	09:25
	Monohull Racing	Pt Vincent to Adelaide Passage Race	09:50
	Multihull Racing	Pt Vincent to Adelaide Passage Race	10:00

The scheduled programme may be altered to accommodate re-sails of abandoned or postponed races.

Warning times indicated are for the first race of the day.

Subsequent starts will be as soon as practicable after the last boat in the division finishes.

9. Courses

Courses will be selected from those listed in below (See Addendum C for mark locations and course maps).

Laid mark courses for all divisions (Category 6)

- Course 1 Start → W1(P) → Finish
- Course 2 Start → W1(P) → L1(P) → W1(P) → Finish
- Course 3 Start → W1(P) → L1 (P) → W1(P) → L1 (P) → W1 (P) → Finish
- Course 4 Start → W2(P) → Finish
- Course 5 Start → W2(P) → L1(P) → W2(P) → Finish
- Course 6 Start → W2(P) → L1(P) → W2(P) → L1(P) → W2(P) → Finish
- Course 7 Start → W2(P) → T(P) → Finish
- Course 8 Start → W2(P) → T(P) → L1(P) → W2(P) → T(P) → Finish
- Course 9 Start → W2(P) → T(P) → L1(P) → W2(P) → Finish
- Course10 Start → W2(P) → T(P) → L1(P) → W2(P) → L1(P) → W2(P) → T(P) → Finish

Passage Race Courses (Category 5)

- Course 11 KoG Start → No1 Lead in/No 3 Lead out (P) → Wonga Shoal Buoy (S) → Northern Silt (P) → Orontes Beacon (S) → Middle Spit Finish (35.5 nm approx)
- Course 12 KoG Start → No1 Lead in/No 3 Lead out (P) → Wonga Shoal Buoy (S) → Orontes Beacon (P) → Middle Spit Finish (30 nm approx)
- Course 13 KoG Start → No1 Lead in/No 3 Lead out (P) → Wonga Shoal Buoy (S) → Long Spit Beacon (P) → Middle Spit Finish (39 nm approx)
- Course 14 KoG Start → No1 Lead in/No 3 Lead out (P) → Middle Spit Finish (28 nm approx)
- Course 15 KoG Start → No1 Lead in/No 3 Lead out (P) → Wonga Shoal Buoy (P) → ASC Mark (S) → Middle Spit Finish (42.5 nm approx)
- Course 16 KoG Start → No1 Lead in/No 3 Lead out (P) → Wonga Shoal Buoy (P) → Grange Mark (S) → Middle Spit Finish (37.5 nm approx)
- Course 17 Pt Vincent Start → Middle Spit beacon (S) → Orontes beacon (P) → Offshore Finish (28.5 nm approx)
- Course 18 Pt Vincent Start → Middle Spit beacon (S) → Orontes beacon (P) → Middle Spit beacon (P) → Pt Vincent Finish (12.5 nm approx/lap)
- Course 19 Pt Vincent Start → Middle Spit beacon (S) → Orontes beacon (P) → Middle Spit laid mark (S) → Orontes beacon (P) → Middle Spit beacon (P) → Pt Vincent Finish (25 nm approx)

10. Start Procedures:

- 10.1 The Starting Line shall be between a staff displaying an orange flag on the Race Committee Start Vessel at the starboard end and the pink inflatable Start Mark at the port end.
- 10.2 Races shall be started using RRS26 with the warning signal to be made 5 minutes before the starting signal.
- 10.3. Warning signal times for the first race or division are as listed in SI 7.
- 10.4 **For Cat 6 races** a boat can not start later than 10 minutes after her start signal.
- 10.5 **For Cat 5 races** a boat can not start later than 20 minutes after her start signal.
- 10.6 Late to the start line - A boat running late for the start may use its engine after the preparatory signal for the purpose of proceeding to the start line, providing that before starting, the boat shuts off her engine and getting well clear of all other boats, makes 1 tack and 1 gybe in the same direction (1 turn penalty) under sail. A boat taking a penalty turn must advise the Race Committee on VHF 77 as soon as practicable after the last scheduled start.
- 10.7 Boats that interfere with race committee boats will be protested by the race committee and may be penalized.
- 10.8 In the interests of safety, boats should keep clear of the start area until their warning signal. [DP]

11. Start Lines

- 11.1 **Cat 5** courses will start and finish in either Adelaide or Port Vincent and may include an intermediary mark(s). At or prior to the warning signal a board showing the course number will be displayed for each division from the stern of the Committee vessel.
- 11.2 **Cat 6** courses, at or prior to the warning signal a board showing the course number will be displayed for each division from the stern of the committee vessel. In addition, an approximate bearing and distance to the first mark may be displayed from the race committee boat. The Race Officer may also announce the course number for each division prior to the first warning signal on VHF 77.
- 11.3 Starting line location for Cat 5 races:
North Haven: Outside the Nth Haven Marina entrance on the South side of the Outer Harbour Channel. The starting line shall be between a staff displaying an orange flag on the race committee boat at the starboard end and the starting mark at the port end.
Pt Vincent: Approximately 500 meters North East of the Marina Entrance the starting line will be between a staff displaying an orange flag on the race committee boat at the starboard end and the starting mark at the port end.

12. Finish Lines:

- 12.1 **For Cat 6 races** the finish line will be between a staff displaying a blue flag on the race committee boat and a black and white chequered mark.
Where the course is shortened at a mark, the race will finish between the start boat and that mark provided that the mark is left on the side it would have been left if the course had not been shortened.
- 12.2 **For Cat 5 races finishing in Pt Vincent.** An imaginary line extending 50 metres due North from the Middle Spit beacon. Boats take their own finish time when the beacon bears due South from the normal helming position. A buoy may be laid to mark the northern end of the finish line.
- 12.3 **For Cat 5 races finishing at Outer Harbor.** The Finish Line shall be an imaginary line extending from the No13 Green beacon to the No 1 Lead In/No 3 Lead out which may be crossed from either direction.
- 12.4 Boats must record their own finishing times for Category 5 races finishing in either Adelaide or Port Vincent and submit them on the completed King of the Gulf Passage race declaration forms available in the Skipper's Handbook or from the RSAYS website under the "Racing" menu.

13. Time Limit [DP]:

- 13.1 For Cat 5 races Boats not finishing at or before 1800 hrs on the day the race commences will be scored TLE.
- 13.2 For Cat 6 races-
- 13.2.1 Where one race is scheduled for the day a time limit of 4.5 hours applies.
 - 13.2.2 Where two races are scheduled for the day a time limit of 1.5 hrs applies to the first race and a time limit of 2.5 hours for the second race.
 - 13.2.3 Boats not finishing within the time limit(s) shall be scored TLE.

14. Radio Communications [DP] :

- 14.1 For Cat 6 races, the race committee will broadcast on VHF 77.
- 14.2 For Cat 5 races, Coast Guard Adelaide will monitor and use VHF 16 and 80.
- 14.3 For Cat 5 races boats not advising finishing within 1 hour of finishing with Coast Guard Adelaide may be scored DNC.
- 14.4 For Cat 5 and 6 races, a boat that retires from a race must notify the Race Committee
- For Cat 6 via channel 77
 - For Cat 5 Coast Guard Adelaide as soon as possible after retiring.
- 14.5 For Cat 5 races boats will maintain a continuous listening watch on VHF 80 and 16 until they are in port at the conclusion of racing.
- 14.6 The race committee may broadcast communication that is available to all competitors. Failure for a competitor to receive or the race committee to transmit this information is not grounds for redress.
- 14.7 Penalties - Boats signalled as being on course side (OCS) and fail to return will have 20% added to their elapsed time. Calls may be made on VHF77 after the start.

15. Scoring :

- 15.1 The low points scoring system will be used. RRS A4 and RRS A5
- 15.2 For the S.A. Multihull Championships. A minimum of 4 races are required to constitute a series.
- 15.3 For the Monohull and Multihull PHS (EHC) Divisions. A minimum of 3 races are required to constitute a series.
- 15.4 For the Cruising Division. A minimum of 2 races are required to constitute a series.

- 15.5 When fewer than 4 races have been completed for a division, a boat's series score is the total of her race scores.
- 15.6 When 4 or more races have been completed, a boat's series score is the total of her race scores excluding her worst score This changes RRS Appendix A2

16. Handicapping [NP]:

- 16.1 For the first race EHC handicaps are allocated by the RSAYS from known performance data. For the second and subsequent races a boat's new AHC (Allocated Handicap) is its SailSys generated handicap under the EHC system.
- 16.2 Boats sailing under OMR handicaps shall as per NOR 8.4 submit the declared crew weights.
Email to mje240@adam.com.au
Include Boat name crew name and weight.

17. Safety [DP] [NP]:

- 17.1. Unless otherwise stated all races are conducted under Australian Sailing SR Part 1 SECTION 2. Crew complement - a minimum of three able body crew, unless complying with –“RSAYS Short-handed Safety Protocol”.
For a Monohull Division 2 yacht the crew complement may be a minimum of two for Cat 6 races.
- 17.2 For Cat 5 races each boat must submit to the RSAYS sailing office, using the SailSys Entry System, a completed Race Crew List prior to or at the Passage Races Briefing.
- 17.3. All crew on boats without lifelines, trailer boats and boats competing under the Short-Handed Protocol must wear PFD1's as per Australian Sailing SR Part 1 SECTION 5. See Addendum C “Personal Safety protocol”
- 17.4 Anchors must be stowed inboard. i.e., no part of the anchor shall protrude beyond the sheer line except for Cat 5 races.
- 17.5 All boats must sign-on:
- For Cat 6 races in person with the Committee Boat.
 - For Cat 5 races all boats will sign on with a pre-race radio check to Coast Guard Adelaide no earlier than 2 hrs and no later than 1 hour prior to the 1st scheduled starting time. These checks are to be made on VHF 80 to confirm their intention to start and the number of persons on board.

A boat unable to complete her pre-race radio check at the prescribed time WILL NOT START.

18. Arbitration/ Protests:

- 18.1 Arbitration - RRS Appendix T2 is deleted and replaced with; An arbitration meeting may be offered prior to a protest hearing for an incident resulting in a protest by a boat involving one or more rules of Part 2 or rule 31, but only if (a) both parties agree to arbitration; and (b) each party is represented by a person who was on board at the time of the incident. No witnesses shall be permitted. However, if the arbitrator decides that RRS 44.1(b) may apply or that arbitration is not appropriate, the meeting shall not be held, and if a meeting is in progress, it shall be closed
- 18.2 For all Cat 5 and 6 races protests must be lodged within 90 minutes of the last boat finishing in the last race of the day or the Race Committee signals no more racing today, whichever is later. Protests shall be in writing - Forms are available from the Race Committee and must be lodged with a member of the race committee. This changes RRS61.3.
- 18.3 The Protest Hearings will be heard via phone unless otherwise notified by the protest committee.
- 18.4 The Protest Time Limit for all protests by the race committee, technical committee or protest committee is 90 minutes after the finish of the last boat in the last race to be held on the relevant course area. This changes RRS 61.3.
- 18.5 Notices of protest by the race committee, technical committee or protest committee will be posted to inform boats under RRS 61.1(b).
- 18.6 A Hearing Schedule will be posted on the Official Notice Board as soon as possible after a protest has been lodged, but not later than 30 minutes after the end of Protest Time to inform competitors of hearings in which they are parties or named as witnesses. Protests will be heard in the order specified on the Hearing Schedule. Parties and witnesses are required to be in the vicinity of the Jury Room located in the Regatta Marquee at the time stated on the Hearing Schedule. It is the responsibility of each party to ensure their witnesses are present.
- 18.7 For the purpose of RRS 64.3(b) the 'authority responsible' is the Multihull Yacht Association of S.A. Measurer.
- 18.8 On the last scheduled day of the regatta a request for reopening a hearing must be lodged within the protest time limit for protests if the party requesting reopening was informed of the decision on the previous day, or no later than 30 minutes after the part requesting reopening was informed of the decision on that day. This alters RRS 66.
- 18.9 On the last scheduled day of racing a request for redress based on a protest committee decision will be delivered no later than 30 minutes after the decision was posted. This changes RRS 62.2.

19. Rendering Assistance:

- 19.1 If a boat sights flares or believes another boat to be in distress it should maintain a watch on VHF Ch 16 or 80 and render assistance.
- 19.2 A boat in distress or assisting another in distress should call for assistance VHF Ch16 or 80.
- 19.3 If a boat uses her engine, full details of the use must be furnished to the satisfaction of the race committee.
- 19.4 Any boat failing to render assistance when able to do so will be subject to protest.
See Fundamental Rule 1.

20. Prizes:

King of the Gulf prizes will be awarded in accordance with the NoR for the following divisions

- Multihull Division (EHC)
- Monohull Division 1 (EHC)
- Monohull Division 2 (EHC)
- Cruising Division (EHC)
- South Australian Trailer Sailer Championships (EHC)
- South Australian Multihull Championships (OMR)

21. Disclaimer of liability and risk warning:

Disclaimer of Liability and Risk Warning. Competitors participate in the Regatta entirely at their own risk.

See RRS 3, Decision to Race.

The Organising Authority will not accept any liability for material damage or personal injury or death sustained in conjunction with or prior to, during, or after the Regatta. Attention is drawn to Addendum A and B of the sailing instructions.

Addendum A

Personal Safety Protocol

All competitors are reminded that they are responsible for their own personal safety, as per:

- RRS 2021-24 Rule 1.2
- AS Special Regulations Part 1 (2017-2020) such that it is strongly recommended that a life jacket be worn by each member of the crew at times such as, but not limited to: (i) When alone on deck (ii) When the true wind speed is 25 knots or above (iii) When visibility is less than 1 nautical mile.
- SA Marine Safety regulations:
https://marinesafety.sa.gov.au/which_lifejacket_do_you_need

It is strongly recommended that:

- Skippers are reminded they have a duty of care to consider crew skill levels/competencies, wind strength/direction, sea state, wave height and direct the wearing of lifejackets accordingly.
- Competitors all wear a life jacket (PFD) in strong winds and at all other times when it is deemed prudent by the skipper.
- All lifejackets comply with AS4758-2008 (Minimum Level150) or AS1512-1996 Type 1 (Not less than 150N), or ISO equivalent. Inflatable lifejackets are used (with automatic inflating preferred).
- All competitors have been briefed on life jacket correct fitting and usage.
- All lifejackets shall be stored, serviced and maintained per manufacturer's recommendations, and a service log maintained for each life jacket.
- Competitors are aware of the significance of RRS Rule 40 where the flying of the "Y" flag (ashore or at the warning signal) invokes the wearing of PFDs for all competitors.

Addendum B

Short Handed Safety Protocol

1. Introduction

- 1.1 This safety protocol applies for races conducted by the RSAYS to boats competing as 'short-handed' racing. Boats shall meet all safety requirements detailed in the Sailing Instructions (SIs) applicable to the race. Requirements of this document are in addition to those stated in the SIs.
- 1.2 Skippers wishing to participate under this document protocol shall contact the RSAYS Boating Officer in writing and be audited and pass a demonstration of compliance inspection by a Safety Officer before being permitted to compete in racing.
- 1.3 Permission will only be granted for the current season of racing and made in writing. A boat may be audited at any time, and if found to be non-compliant will be scored DNC without a hearing from the race applicable or directly prior to the inspection.

2. Safety Requirements

- 2.1 Competitors shall wear PFD's at all times.
- 2.2 Boats shall rig jackstays in accordance with AS SR 4.03.1 for all short-handed racing.
- 2.3 Marine radio:
 - 2.3.1 Boats racing in Category 6 races shall carry VHF marine transceiver. This transceiver is not required to be permanently installed but must be capable of a rated output of 5W. This changes AS SR 3.25.2 and is an addition to this rule. It is strongly recommended that boats whilst racing are capable of hearing and operating a VHF marine transceiver from the helm position.
 - 2.3.2 Boats racing in short-handed Category 3 races shall in addition to AS SR 3.25 be capable of hearing and operating a VHF transceiver from the helm position.
 - 2.3.3 Boats shall monitor continuously the appropriate Radio Channels.
- 2.4 The engine carried for the race category as per AS SR shall be ready for immediate use.
- 2.5 An orange smoke and /or red flare shall be carried on deck ready for immediate use. Igniting this flare may be used to indicate a Man Overboard.
- 2.6 A lifebuoy or Dan-buoy shall be capable of being deployed from the helm position.
- 2.7 A heaving line in accordance with AS SR 4.23.1 shall be carried on deck ready for use.
- 2.8 AS SR 3.12.5 (lifeline dimensions) is mandatory for Category 6 races.
- 2.9 For Category 5 - all crew on board shall have a current SSSC or Sea Safety Day Certificate.
- 2.10 For Category 5 – crew shall be able to set a GPS waypoint from the helm position in the event of MOB. This may be set manually or automatically by a short-range radio system.
- 2.11 The Racing Committee reserves the right to audit a boat and revoke any permission granted for non-compliance with these instructions.

3. Skipper's Check List

The following is a checklist as an aid for skippers in briefing short-handed crew members.

Procedures

- Starting and Stopping the engine
- Use of VHF Radio - emergency radio procedures
- Operation of MOB equipment - MOB recovery
- Lifebuoy and Dan-buoy deployment
- Use of the heaving line
- Operation of GPS MOB recovery
- Shorten sail single handed
- Operation of auto-pilot if fitted
- Operation and location of flares
- Operation of bilge pumps
- Operation and location of fire extinguishers

Equipment Location

- First Aid Kit
- Emergency Tools - bolt croppers, hacksaw, cockpit knife, etc
- Emergency steering
- Gas valve
- Fuel valve
- Anchor
- EPIRB
- Torches

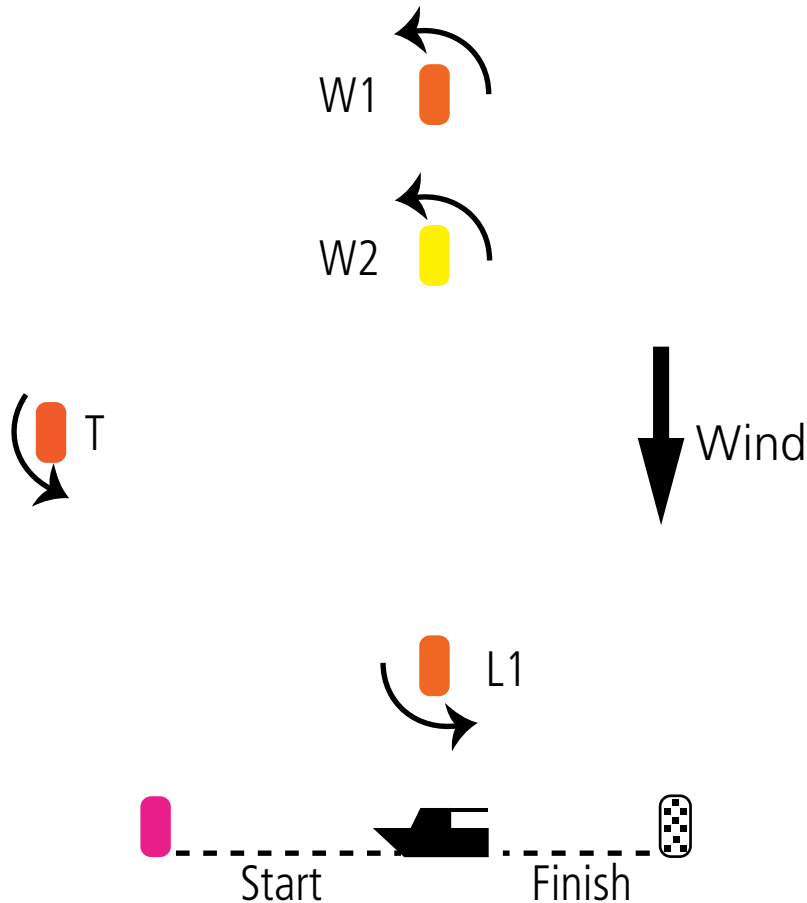
Addendum C

Mark Locations and Course Maps

Mark Locations

Mark	Latitude	Longitude
No 1 Lead in/No 3 Lead out	34° 47.633'S	138° 27.176'E
No 13 Green beacon	34° 47.592'S	138° 26.923'E
Wonga Shoal Buoy	34° 49.966'S	138° 26.082'E
Northern Silt	34° 44.850'S	138° 26.669'E
Adelaide Sailing Club (ASC)	34° 57.468'S	138° 29.362'E
Grange Mark (orange inflatable)	34° 54.160'S	138° 28.546'E
Long Spit beacon	34° 35.926'S	138° 05.501'E
Orontes beacon	34° 45.385'S	138° 00.476'E
Middle Spit beacon	34° 45.338'S	137° 54.167'E
Middle Spit laid mark (orange inflatable)	34° 45.226'S	137° 54.170'E

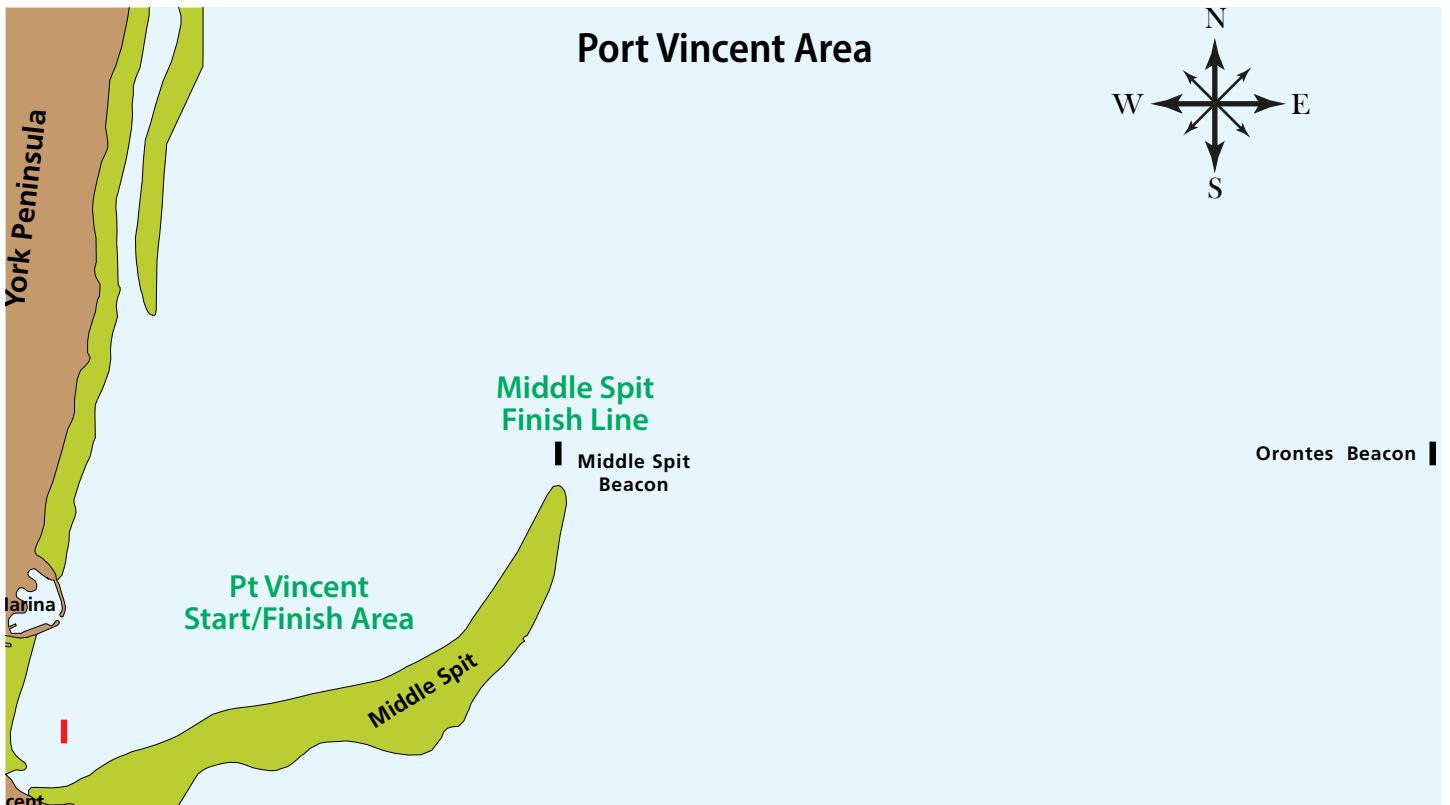
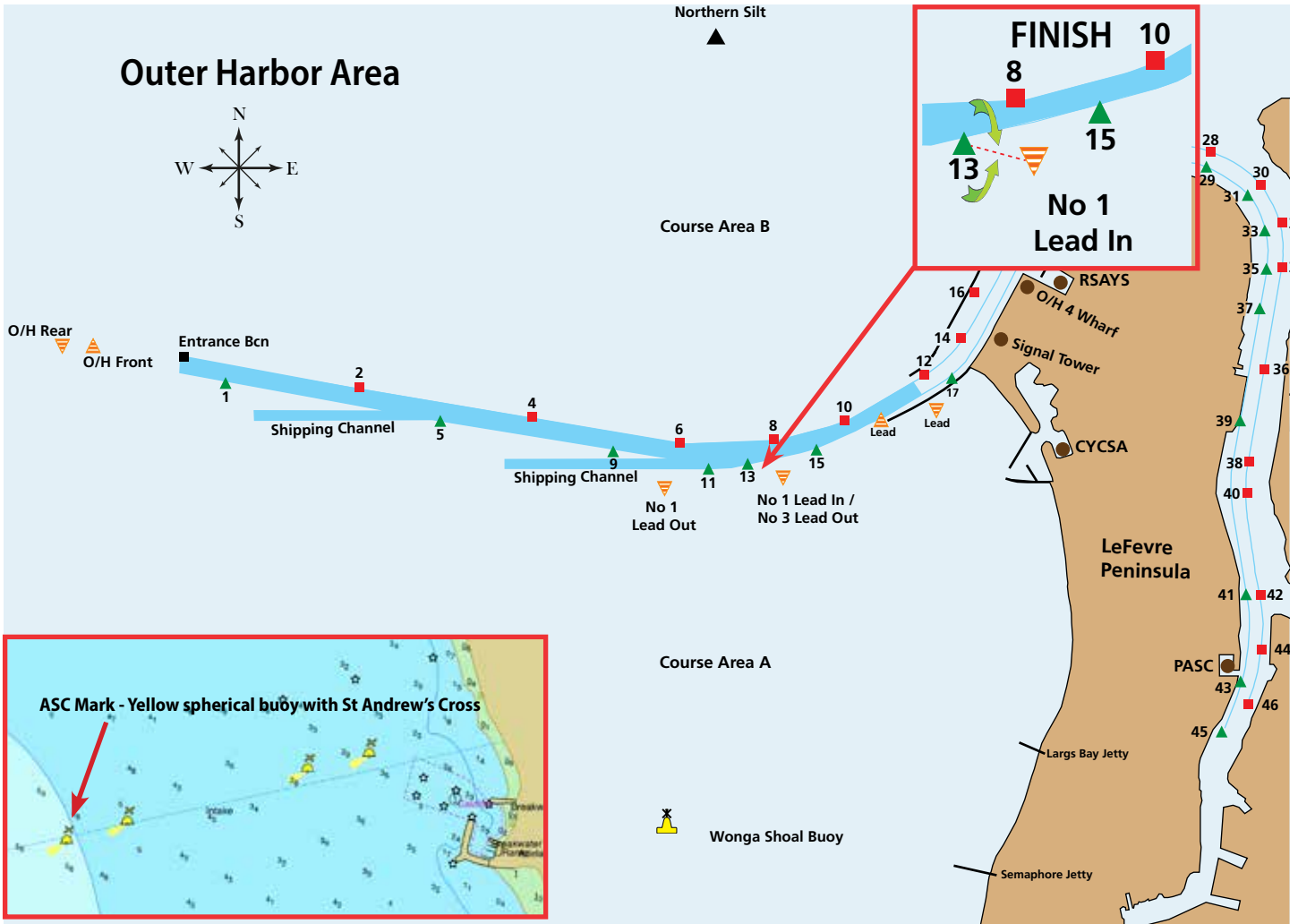
Laid mark courses for all divisions (Category 6)



Starting and finishing: Marks will be a black and white chequered buoy or a pink buoy.

Laid mark races for all divisions (Cat 6): Course marks will be large inflatable buoys, W1 will be orange, and W2 will be yellow. L1 will be orange. T will be orange. Change mark will be yellow with a black horizontal band.

New Marks: For Cat 6 races to change the next leg of the course, the race committee will lay a new mark (or move the finishing line) and remove the original mark as soon as practicable. When in a subsequent change a new mark is replaced, it will be replaced by an original mark



Sponsors

Regatta Sponsor – Dockside Port Vincent

Sunday Day Sponsor – 35 South Marina

Monday Sponsor – Multihull Yacht Association of South Australia

Teams Competition – Wireless Communications & North Haven Marine

Passage Race Sponsors – Adelaide to Pt Vincnet CYCSA & Port Vincent to Adeliade RSAYS

